

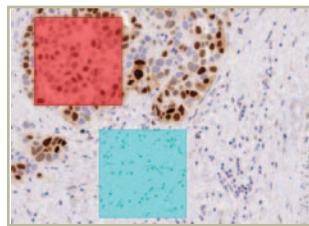
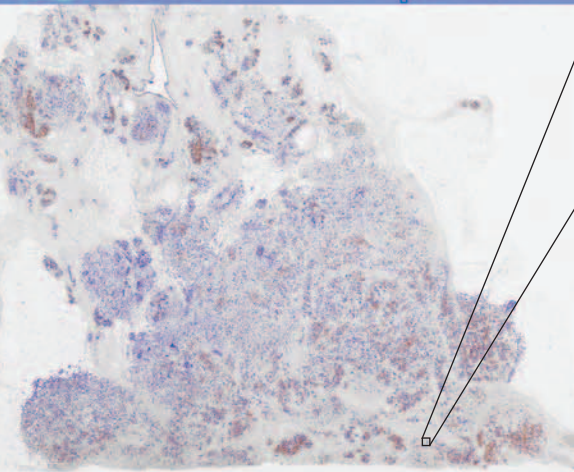
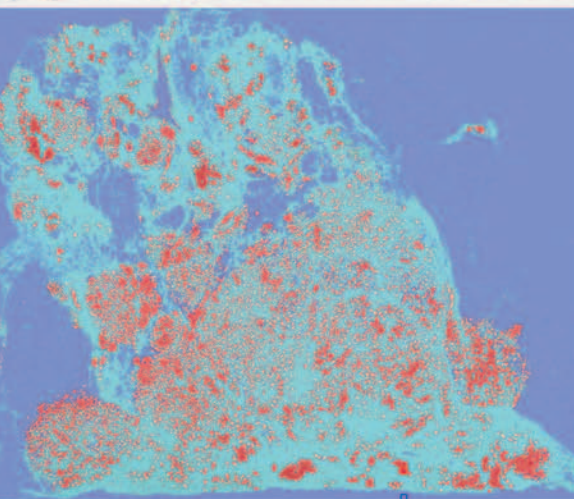
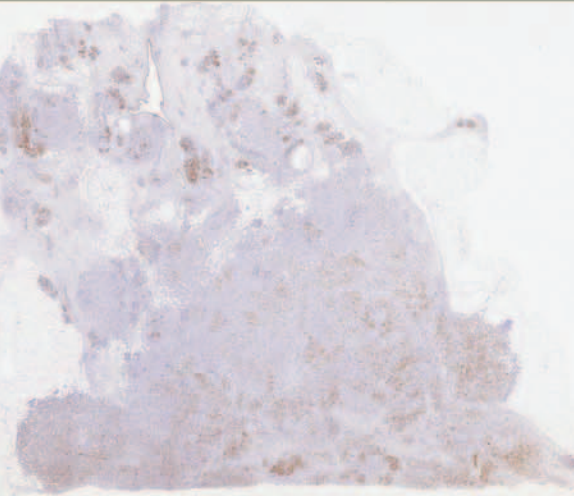
Genie™

Histology Pattern Recognition

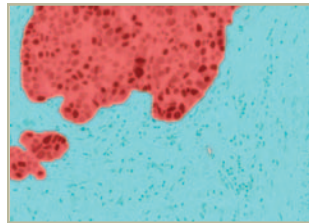
Aperio introduces the first easy-to-use histology recognition tool that does not require image analysis expertise. Pathologists train Genie with examples to identify different tissue types across entire sections.

Genie, in conjunction with our quantitative image analysis tools, provide pathologists with an automated, whole-slide image analysis solution.

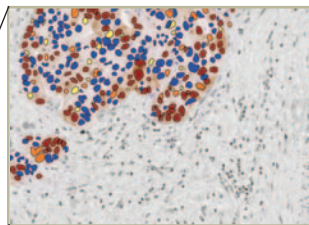
The power of automatic Image Analysis in the hands of pathologists.



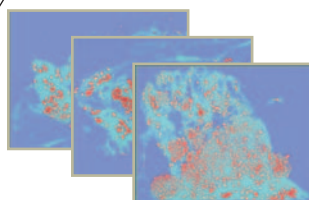
1. Train Genie with examples of the different tissue types.



2. Genie then identifies the different tissue types across entire tissue sections.



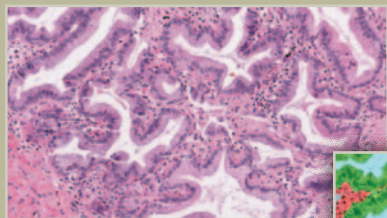
3. Use Genie with Aperio's quantitative image analysis tools and you get quantitative measurements for the different tissue types.



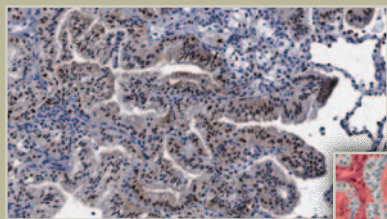
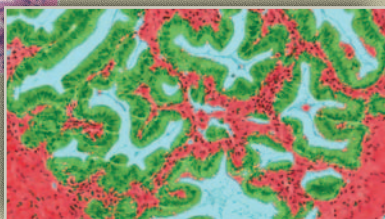
Automatic whole-slide analysis of entire tissue sections across large sets of slides.

Tumor cell detection (red) using Genie, in breast specimens immunohistochemistry stained with Estrogen Receptor (ER), followed by nuclear quantification.

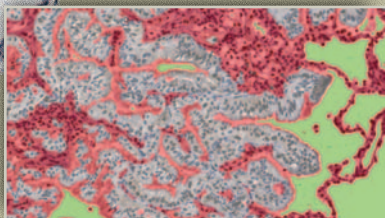
ONCOLOGY



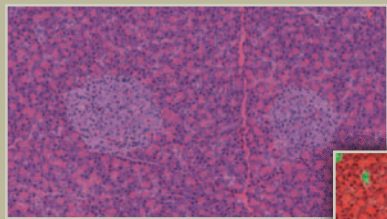
Neoplastic components (green) and background stroma (red) in a human bronchoalveolar carcinoma



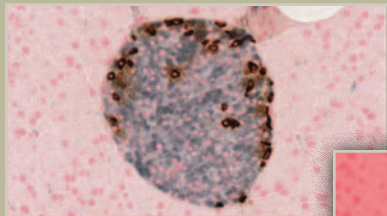
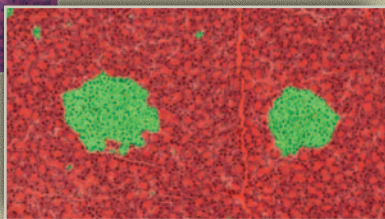
Pulmonary parenchyma (red) and alveolar lumina (green) in human pulmonary bronchoalveolar carcinoma (white)



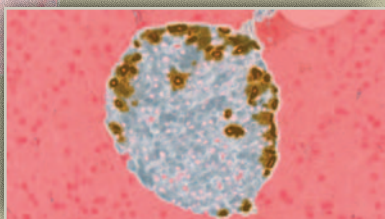
DIABETES



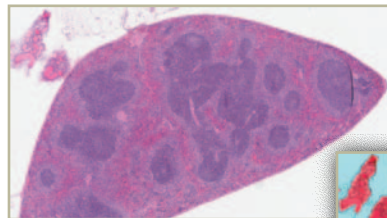
Exocrine glandular tissue (red) and pancreatic islets (green) in mouse pancreas



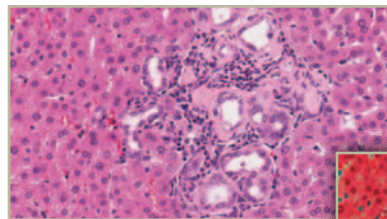
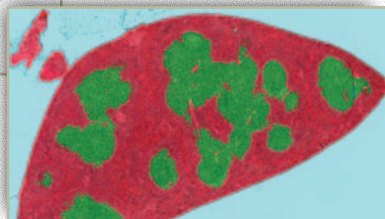
Pancreatic islet beta cells (blue) and islet alpha cells (brown) in double-stained mouse pancreatic islets



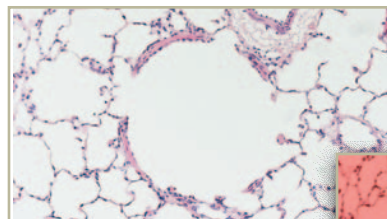
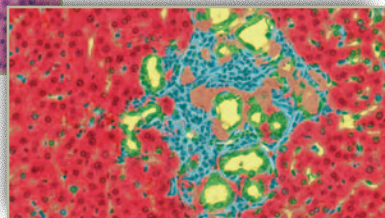
TOXICOLOGY



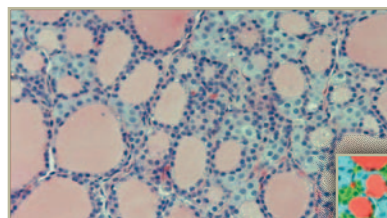
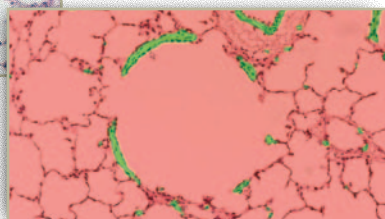
Periarteriolar lymphoid tissue (green) and red pulp (red) in a mouse spleen



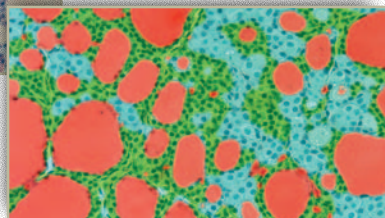
Hyperplastic bile duct (green), hepatic parenchyma (red), periportal inflammatory cells (blue), periductal collagen (brown), bile duct and sinusoidal lumina (yellow) in rat liver



Pulmonary smooth muscle (green) in monkey lung



Follicular epithelium (green), colloid (red) and c-cells (blue) in dog thyroid



866.478.4111
info@aperio.com
support@aperio.com
www.aperio.com

